

Memorandum

To: Honorable Mayor Shetter and members of the Burleson City Council

From: Aaron Russell, P.E., Director of Public Works

Date: April 20, 2009

Subject: Award ITB 2009-024, 2009 Mill and Overlay program to Reliable Paving, Inc.

Council Action Requested:

Award the bid for the 2009 Mill and Overlay program to Reliable Paving, Inc. in the amount of \$213,052.50. (ITB 2009-024)

Background Information:

The Purchasing Department opened bids for ITB 2009-024 on March 30, 2009 at 2:00 p.m. at City Hall. Bids were received from eight (8) vendors registered to do business with the City. Reliable Paving, Inc. submitted the lowest responsible bid.

The Mill and Overlay program has been an ongoing maintenance program in Public Works since fiscal year 2004-2005. Annually, the goal is to complete four lane miles of mill and overlay on existing asphalt streets that have an overall condition index (OCI) of 5 or 6. Please find a project street list denoting the project locations.

Board/Citizen Input:

N/A

Financial Considerations:

Funding for this project was provided in the FY2008-09 General Fund, Public Works Department, Account # 001-4017-432-4103

Attachments:

1. 2009 Mill and Overlay Program Street List
2. Project Map
3. Bid Tabulation

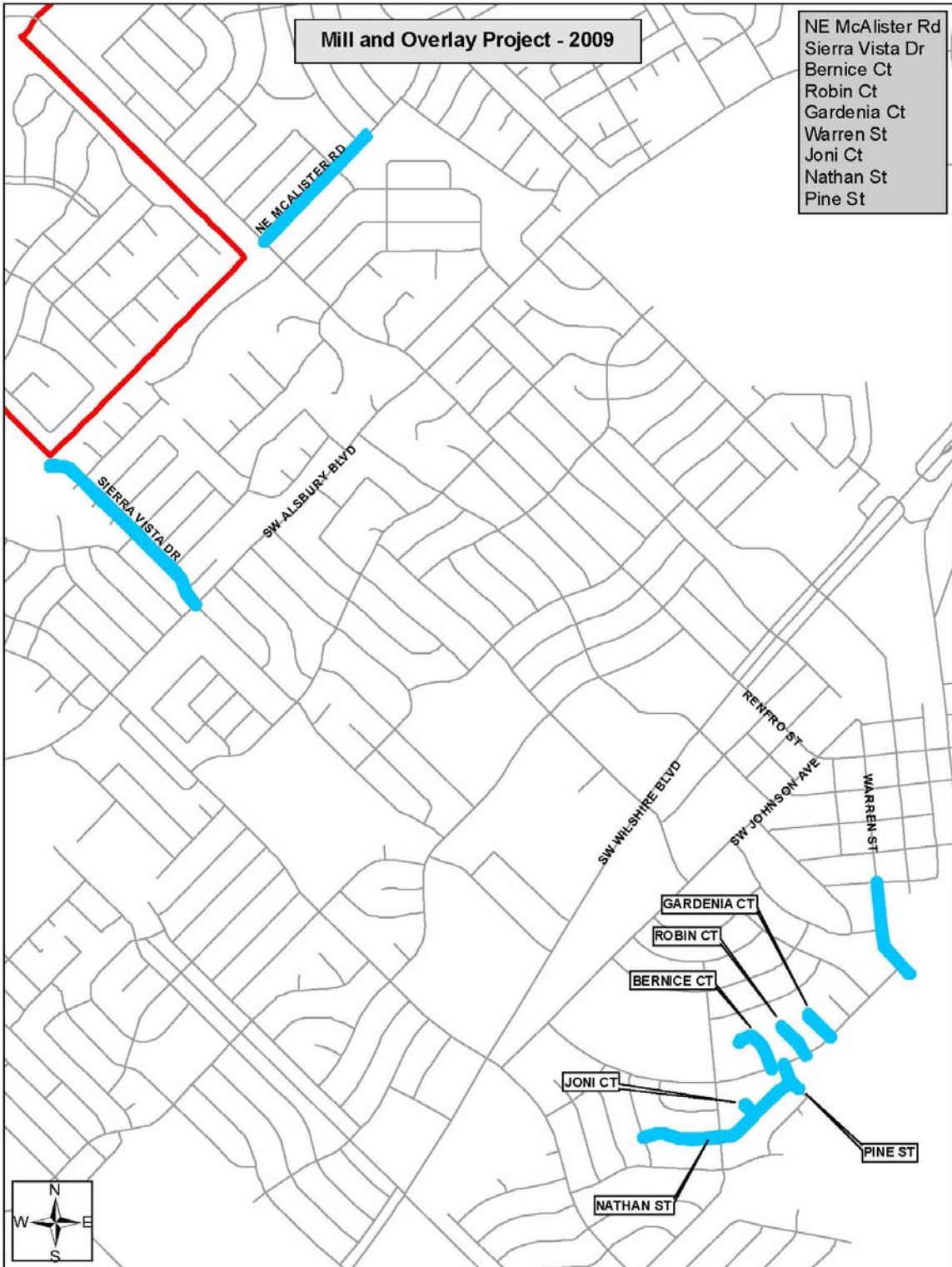
Staff Contact:

Rey Gonzales, Assistant Director of Public Works
817-447-5410 x271
rgonzales@burlesontx.com

Aaron Russell, P.E., Director of Public Works
817-447-5410 x250
arussell@burlesontx.com

2009 Mill and Overlay Program Street List

STREET	FROM	TO	SQ.YDS.
McAlister St.	Renfro	Concrete	6,800
Sierra Vista	Alsbury	Court	6,356
Bernice Ct.	Gregory	Court	1,733
Robin Ct.	Gregory	Court	1,228
Gardenia Ct.	Gregory	Court	1,011
Warren St.	Town Creek	Dead End	4,222
Joni Ct.	Nathan	Court	578
Nathan	Pine	Lester	5,056
Pine	Gregory	Concrete	867
		TOTAL	27,850



**ITB 2009-024
2009 Mill and Overlay Program
Bid Tabulation**

DESCRIPTION	Reliable Paving, Inc	JLB Contracting LP	Austin Bridge & Road, LP	Premier Paving, LTD	JRJ Paving, LP	Styles Contracting	APAC-Texas, Inc.	Lindsey Contractors
Addendum 1	Yes	Yes	Yes	Yes	Yes	Yes	Yes	Yes
Addendum 2	Yes	Yes	Yes	Yes	Yes	Yes	Yes	Yes
Bid Bond Enclosed	Yes	Yes	Yes	Yes	Yes	Yes	Yes	Yes
Item 1 – 27,850 sq yds Edge mill w/ 2" overlay	\$213,052.50	\$222,800.00	\$226,699.00	\$226,977.50	\$232,171.60	\$246,472.50	\$252,042.50	\$279,892.50

Selected Vendor