

Burleson

T E X A S ★



CITY OF
BURLESON

ENVIRONMENTAL SERVICES



Febuary 2014 | David Lenartowicz

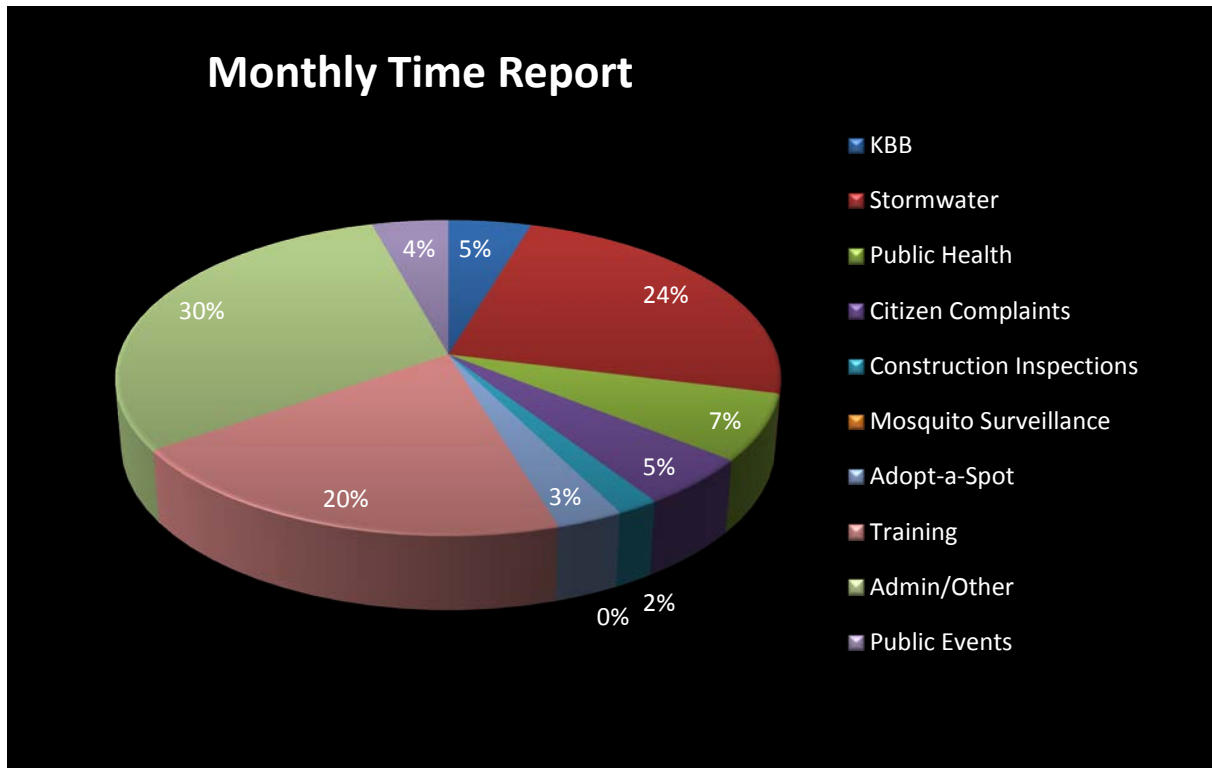


Summary/Scope

The City of Burleson Environmental Services Division works to maintain public health and safety by:

- Maintaining a mosquito surveillance program.
- Maintain resident's property values by conducting clean-up events.
- Protect the environment by providing means of disposal for household hazardous waste, electronics, and paper shredding.
- Ensure city compliance with State and Federal environmental regulations.
- Maintain inter-local agreements with local municipalities and counties to ensure services to Burleson residents.
- Expand awareness of environmental issues through public education events.
- Address public concerns and complaints about environmental and public health issues.
- Ensure environmental compliance of local manufacturing facilities and construction sites.
- Monitor and impliment the City of Burleson's Stormwater Management Program as required by the TCEQ Stormwater permit.

Monthly Time Report



- 5% Working with Keep Burleson Beautiful
- 24% Working on Storm Water permitting issue
- 7% Working on Public Health issues
- 5% Addressing Citizen Complaints
- 2% Working on Construction Investigations
- 0% Working on Mosquito surveillance
- 3% Working on Adopt-a-spot/Litter Rangers
- 20% In Trainings or meetings
- 30% Working on Administrative Tasks
- 4% Working on Public Events



The Environmental Divisions time was divided into the following categories:

1. Keep Burleson Beautiful – Environmental Services maintains a close relationship with this non-profit 501(c)3 organization to achieve common goals in the beautification of the community.
2. Storm water permitting and enforcement – The City of Burleson maintains a Municipal Separate Storm Sewer Systems Permit (MS4) under the Texas Pollutant Discharge Elimination System (TPDES). Strict enforcement and reporting are required to maintain compliance.
3. Public Health – Environmental Services maintains an agreement with Tarrant County Public Health to ensure public safety by conducting inspections of restaurants, daycare facilities, and public pools.
4. Citizen Complaints/Concerns - The Environmental Services Division works to address public concerns on environmental issues and violations in a timely manner.
5. Construction Investigations – Environmental Services observes and inspects construction projects in Burleson to ensure proper environmental permits are obtained, and proper erosion controls are in place to protect the Storm Water system.
6. Mosquito Surveillance – Environmental Services traps mosquitos for quantitative analysis. Samples are also taken to test for West Nile Virus.
7. Adopt-a-Spot/Litter Rangers – Environmental Services has numerous opportunities for the public to volunteer and help to keep Burleson a clean and safe place to live. The Adopt-a-Spot Program allows community groups to sponsor a particular park, street, or waterway. For their work they are recognized with a sign posted to let the residents know who is keeping the area litter free. The Litter Ranger Program allows minors to volunteer their time picking up litter throughout Burleson. It is often used to help minors in need of volunteer hours for school programs or community service.
8. Training/Meetings – Training is often required to stay current with certifications, and changes in legislation. Municipalities throughout the North Texas region meet regularly to discuss environmental issues, and cooperative efforts to meet our legal obligations.
9. Administrative – To maintain compliance with the State and Federal permits and laws, documentation and reporting of all activities ensures the City of Burleson will meet its legal obligations.
10. Public Events – Environmental Services conducts multiple public events for education, disposal of household hazardous waste, Litter control, disposal of electronics, paper shredding, and litter abatement.

Activities

Feb. 21, 2014 – Keep Burleson Beautiful received Keep America Beautiful President's Circle Award during Keep America Beautiful's 2014 National Conference, which recently took place in Charlotte, N.C. The President's Circle Award recognizes exemplary performance made by certified affiliates of the national nonprofit in building and sustaining vibrant communities.

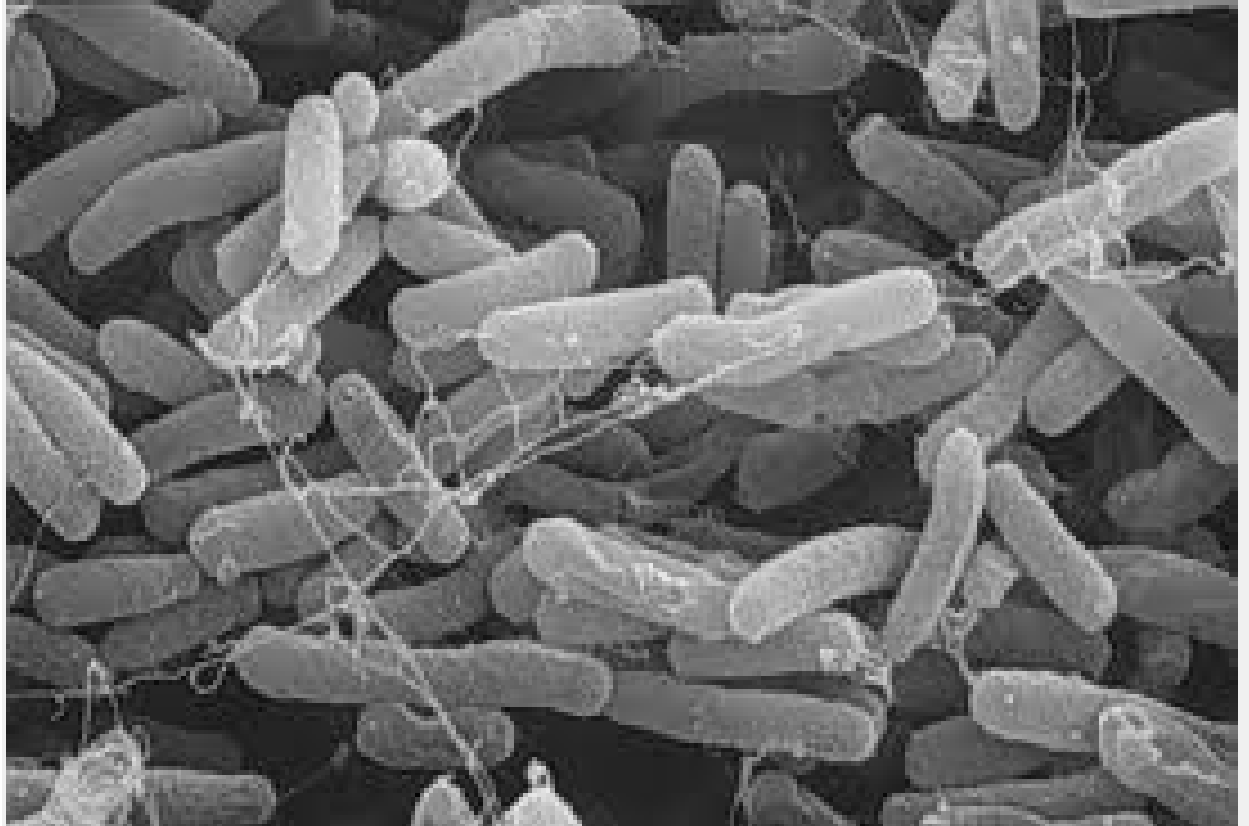
In qualifying for a President's Circle Award, Keep Burleson Beautiful has met Keep America Beautiful's standards of merit by conducting an annual Community Appearance Index, calculating the affiliate's cost/benefit ratio, and administering activities in the areas of litter prevention, recycling and waste reduction, and beautification and community greening.

Stormwater

The City of Burleson is required to manage a Municipal Separate Storm Sewer System Permit. (MS4) This Permit is issued under the Texas Pollutant Discharge Elimination System. (TPDES) It requires that the City of Burleson create and maintain a series of Best Management Practices (BMP's) in order to protect "Waters of the United States" to the Maximum Extant Possible (MEP). Primarily the permit requires that the city protect the stormwater conveyances which drain directly into the creeks, streams, rivers, and lakes from illicit discharges from any source by maintaining a Stormwater Management Plan. (SWMP) Illicit discharge sources include but are not limited to industrial activities, construction activities, as well as residential contamination of the MS4. The permit requires that BMP's cover:

- Public education.
- Public involvement/participation.
- Construction site stormwater runoff control.
- Implementation of an illicit discharge detection and elimination system. (IDDES)
- Post construction stormwater management.
- Pollution Prevention.
- Good housekeeping for municipal operations.

The EPA has currently placed Village creek as an impaired water body for bacteria. Runoff from the City of Burleson storm system drains into these waters. The EPA has not yet determined the source of the bacteria or the Total Maximum Daily Load (TMDL) that it will allow into the impaired water body.



In February, the City of Burleson submitted its Stormwater Management Plan (SWMP) to the Texas Commission on Environmental Quality for approval. The SWMP was submitted before the June 11th deadline thanks to the collaboration of several departments. The following departments/divisions worked to ensure the city had a workable and effective plan for keeping local water bodies free of pollution and contaminants:

- Animal Services
- GIS
- Communications
- T/PW
- Solid Waste
- Parks
- Engineering



- Building Permits
- Burleson Police Department
- Neighborhood Services

Environmental Services

- Ensured new requirements are implemented in the Stormwater Management Plan in an effective manner with minimal economic impact to the city.
- Conducted 5 field investigations of construction sites for proper erosion controls.
- Copnducted 5 Stormwater inspections based on complaints or violations.
- Met individually with several departments to collaborate on impacts and implementation of new permit.
- Attended 4 Stormwater meetings the stormwater permit.

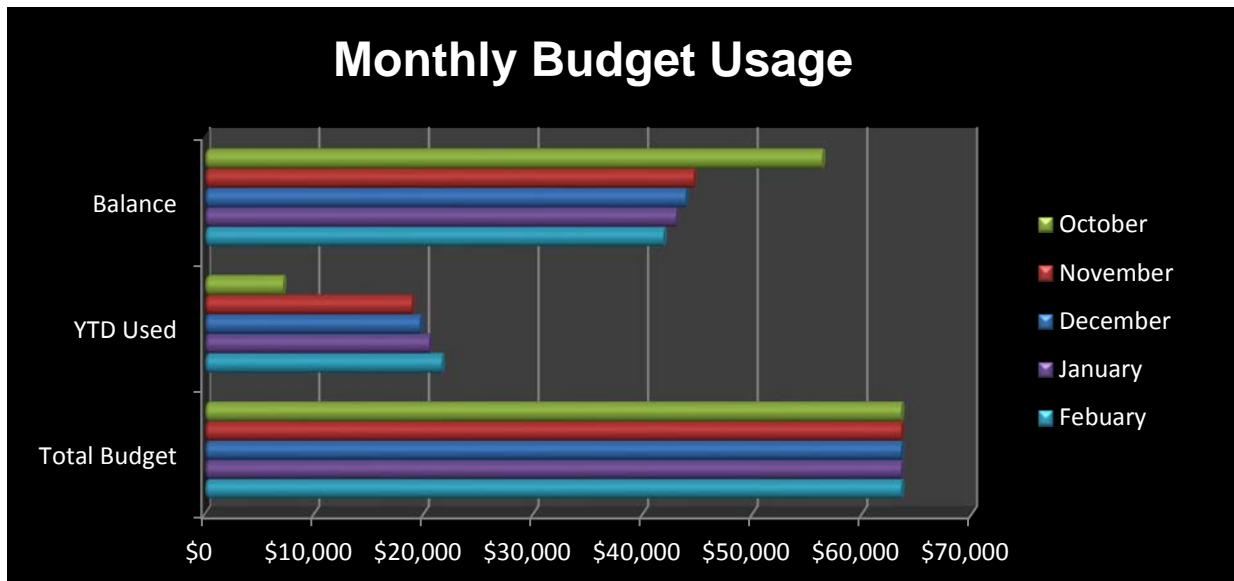
Training/Meetings

During the month of Febuary the Environmental Specialist attended various trainings/meetings including:

- Met with local officials at the North Central Texas Council of Governments (NCTCOG) regarding stormwater related issues.
- Monthly meeting with Tarrant County Public Health regarding food inspections and public health concerns.
- Met with the Public Education Task Force meeting with NCTCOG.
- Participated in the organization of the Food Establishment Townhall meeting.
- Spoke at the Developers Roundtable to discuss the new Stormwater Permit and it's effects on development and construction in the City of Burleson.

Budget

The annual operation budget of the Environmental Services Division for FY 13-14 is \$63,604. With 41.7% of the Budget year elapsed. Environmental Services is within budget with year to date expenditures of \$21683.48 or 34.1% of the budget. Expense categories are as follows:



ENVIRONMENTAL SERVICES

February 2014 EXPENDITURES

Account Number 001-4515-434	Account Description	Budget	YTD Expenses	Balance	% used
42-08	Equipment Maint. and Repair	\$0	\$0	\$0	0%
43-02	Insect Control Services	\$16,000	\$15,750	\$250	98.4%
50-01	Memberships and Licenses	\$4,175	\$695	\$3,480	16.6%
50-02	Subscriptions/Books/Publications	\$40	\$0	\$40	0%
50-03	Personnel Dev & Activity	\$2,065	\$1,722.42	\$342.58	83.4%
50-08	Mileage Reimbursement	\$1600	\$0	\$1600	0%
54-01	Printing & Graphic Services	\$3500	\$86.04	\$3,413.96	2.5%
55-07	Laboratory Charges	\$1,000	\$0	\$1,000	0%
60-01	Office Supplies and Materials	\$646	\$156.68	\$489.32	24.25%
60-03	Insect Control Supplies	\$0	\$0	\$0	N/A
60-07	Postage	\$100	\$23.25	\$76.75	23.3%
60-11	Minor Tools & Materials	\$500	\$115.92	\$384.08	23.3%
60-13	Uniforms	\$80	\$346.43	-\$266.43	>100%
60-14	Protective Clothing/Materials	\$150	\$146.72	\$3.28	97.8%
64-03	Fuel	\$0	\$244.72	-\$244.72	>100%
66-03	Minor Machinery and Equipment	\$0	\$0	\$0	N/A
80-13	Projects/Events/Meetings	\$4,700	\$709.65	\$3990.35	15.1%
82-16	IT Contribution	\$4,048	\$1,686.65	\$2361.35	41.2%
82-17	Equipment Services Contribution	\$0	\$0	\$0	N/A
90-04	Environmental Disposal	25,000	\$25,000	\$0	100%
Total		\$63,604	\$21683.48	\$41,920.52	34.1%

Public Health

In February there were 25 Public Health Food Establishment inspections, and 1 inspections of schools and daycare facilities performed in Burleson. Higher scores are the results of increasing infractions. The results are as follows:

February 2014 Inspection Report-Burleson

<u>Date</u>	<u>Business</u>	<u>Score</u>
<i>Food:</i>		
2/4	Golden Corral	4
2/4	St. Ann Catholic Church	0
2/4	Wendy's (Burleson Blvd)	0
2/5	Hummingbird Sweet	0
2/7	The Porch	7
2/11	Fuzzy's	49
2/14	Walmart – Grocery	0
2/14	Walmart – Bakery	0
2/14	Walmart – Deli	7
2/14	Walmart – Cut Produce	0
2/14	Walmart – Meat	0
2/14	Walmart – Fish	0
2/14	Subway (inside Walmart)	16
2/18	JJ Oyster Bar – Restaurant	8
2/18	JJ Oyster Bar – Lounge	8
2/24	Sonic (Elk)	15
2/24	Chick Fil A (John Jones)	14
2/24	Wendy's (John Jones)	10
2/24	Target (Snack)	0
2/24	Target (Groc)	4
2/24	Burleson Independent Soccer	0
2/25	!st Baptist Childcare (kitchen)	3
2/25	El Fenix	13
2/25	Applebees (Restaurant)	8
2/25	Applebees (Lounge)	7
<u>Date</u>	<u>Business</u>	<u>Score</u>

Child Cares

2/25	1 st Baptist Childcare	0
------	-----------------------------------	---

For more information and to see how your favorite restaurant scores go to
<https://publichealth.tarrantcounty.com/foodinspection/>

Definition of Terms:

Best Management Practices (BMPs) - Schedules of activities, prohibitions of practices, maintenance procedures, structural controls, local ordinances, and other management practices to prevent or reduce the discharge of pollutants. BMPs also include treatment requirements, operating procedures, and practices to control runoff, spills or leaks, waste disposal, or drainage from raw material storage areas.

Clean Water Act (CWA) - The Federal Water Pollution Control Act or Federal Water Pollution Control Act Amendments of 1972, Pub.L. 92-500, as amended Pub. L. 95-217, Pub. L. 95-576, Pub. L. 96-483 and Pub. L. 97-117, 33 U.S.C. 1251 et.seq.

Conveyance - Curbs, gutters, man-made channels and ditches, drains, pipes, and other constructed features designed or used for flood control or to otherwise transport storm water runoff.

Daily Maximum - For the purposes of compliance with the numeric effluent limitations this is the maximum concentration measured on a single day, by grab sample, within a period of one calendar year.

Discharge - When used without a qualifier, refers to the discharge of storm water runoff or certain non-storm water discharges as allowed under the authorization of this general permit.

Gravid Trap - The trap is designed to attract and capture gravid female mosquitoes of a target species in unharmed condition. The attractant is a baited water solution, either collected locally or formulated to simulate water found in the natural habitat. As gravid females approach the water to deposit eggs, they are pulled upward into a collecting container housed in the upper compartment. This container is removable for inspection or processing of specimens.

Ground Water Infiltration - For the purposes of this permit, groundwater that enters a municipal separate storm sewer system (including sewer service connections and foundation drains) through such means as defective pipes, pipe joints, connections, or manholes.

Illicit Connection - Any man-made conveyance connecting an illicit discharge directly to a municipal separate storm sewer.



Illicit Discharge - Any discharge to a municipal separate storm sewer that is not entirely composed of storm water, except discharges pursuant to this general permit or a separate authorization and discharges resulting from emergency firefighting activities.

Industrial Activities - manufacturing, processing, material storage, and waste material disposal areas (and similar areas where storm water can contact industrial pollutants related to the industrial activity) at an industrial facility described by the TPDES Multi Sector General Permit, TXR050000, or by another TCEQ or TPDES permit.

Large Construction Activity - Construction activities including clearing, grading, and excavating that result in land disturbance of equal to or greater than five (5) acres of land. Large construction activity also includes the disturbance of less than five (5) acres of total land area that is part of a larger common plan of development or sale if the larger common plan will ultimately disturb equal to or greater than five (5) acres of land. Large construction activity does not include routine maintenance that is performed to maintain the original line and grade, hydraulic capacity, and original purpose of a ditch, channel, or other similar storm water conveyance. Large construction activity does not include the routine grading of existing dirt roads, asphalt overlays of existing roads, the routine clearing of existing right-of-ways, and similar maintenance activities.

Maximum Extent Practicable (MEP) - The technology-based discharge standard for municipal separate storm sewer systems to reduce pollutants in storm water discharges that was established by CWA . 402(p). A discussion of MEP as it applies to small MS4s is found at 40 CFR . 122.34.

MS4 Operator – The public entity, and/ or the entity contracted by the public entity, responsible for management and operation of the small municipal separate storm sewer system that is subject to the terms of this general permit.

Outfall - For the purpose of this permit, a point source at the point where a municipal separate storm sewer discharges to waters of the United States (U.S.) and does not include open conveyances connecting two municipal separate storm sewers, or pipes, tunnels, or other conveyances that connect segments of the same stream or other waters of the U.S. and are used to convey waters of the U.S.

Point Source - (from 40 CFR . 122.22) any discernible, confined, and discrete conveyance, including but not limited to, any pipe, ditch, channel, tunnel, conduit, well, discrete fissure, container, rolling stock, concentrated animal feeding operation, landfill leachate collection system, vessel or other floating craft from which pollutants are or may be discharged. This term does not include return flows from irrigated agriculture or agricultural storm water runoff.

Pollutant(s) of Concern - Include biochemical oxygen demand (BOD), sediment or a parameter that addresses sediment (such as total suspended solids, turbidity or siltation), pathogens, oil and grease, and any pollutant that has been identified as a cause of impairment of any water body that will receive a discharge from an MS4. (Definition from 40 CFR . 122.32(e)(3)).

Redevelopment - Alterations of a property that changed the footprint of a site or building in such a way that there is a disturbance of equal to or greater than one (1) acre of land. This term does not include such activities as exterior remodeling.

Small Construction Activity - Construction activities including clearing, grading, and excavating that result in land disturbance of equal to or greater than one (1) acre and less than five (5) acres of land. Small construction activity also includes the disturbance of less than one (1) acre of total land area that is part of a larger common plan of development or sale if the larger common plan will ultimately disturb equal to or greater than one (1) and less than five (5) acres of land. Small construction activity does not include routine maintenance that is performed to maintain the original line and grade, hydraulic capacity, and original purpose of a ditch, channel, or other similar storm water conveyance. Small construction activity does not include the routine grading of existing dirt roads, asphalt overlays of existing roads, the routine clearing of existing right-of-ways, and similar maintenance activities.

Small Municipal Separate Storm Sewer System (MS4) – refers to a conveyance or system of conveyances (including roads with drainage systems, municipal streets, catch basins, curbs, gutters, ditches, man-made channels, or storm drains): (i) Owned or operated by the United States, a state, city, town, borough, county, district, association, or other public body (created by or pursuant to State law) having jurisdiction over disposal of sewage, industrial wastes, storm water, or other wastes, including special districts under State law such as a sewer district, flood control district or drainage district, or similar entity, or an Indian tribe or an authorized Indian tribal organization, or a designated and approved management agency under .208 of the CWA; (ii) Designed or used for collecting or conveying storm water; (iii) Which is not a combined sewer; (iv) Which is not part of a publicly owned treatment works (POTW) as defined at 40 CFR . 122.2; and (v) Which was not previously authorized under a NPDES or TPDES individual permit as a medium or large municipal separate storm sewer system, as defined at 40 CFR §§122.26(b)(4) and (b)(7). This term includes systems similar to separate storm sewer systems at military bases, large hospital or prison complexes, and highways and other thoroughfares. This term does not include separate storm sewers in very discrete areas, such as individual buildings. For the purpose of this permit, a very discrete system also includes storm drains associated with certain municipal offices and education facilities serving a nonresidential population, where



those storm drains do not function as a system, and where the buildings are not physically interconnected to an MS4 that is also operated by that public entity.

Storm Water and Storm Water Runoff - Rainfall runoff, snow melt runoff, and surface runoff and drainage.

Storm Water Associated with Construction Activity - Storm water runoff from an area where there is either a large construction activity or a small construction activity.

Storm Water Management Program (SWMP) - A comprehensive program to manage the quality of discharges from the municipal separate storm sewer system.

Structural Control (or Practice) - A pollution prevention practice that requires the construction of a device, or the use of a device, to capture or prevent pollution in storm water runoff. Structural controls and practices may include but are not limited to: wet ponds, bioretention, infiltration basins, storm water wetlands, silt fences, earthen dikes, drainage swales, vegetative lined ditches, vegetative filter strips, sediment traps, check dams, subsurface drains, storm drain inlet protection, rock outlet protection, reinforced soil retaining systems, gabions, and temporary or permanent sediment basins.

Surface Water in the State - Lakes, bays, ponds, impounding reservoirs, springs, rivers, streams, creeks, estuaries, wetlands, marshes, inlets, canals, the Gulf of Mexico inside the territorial limits of the state (from the mean high water mark (MHW) out 10.36 miles into the Gulf), and all other bodies of surface water, natural or artificial, inland or coastal, fresh or salt, navigable or nonnavigable, and including the beds and banks of all water-courses and bodies of surface water, that are wholly or partially inside or bordering the state or subject to the jurisdiction of the state; except that waters in treatment systems which are authorized by state or federal law, regulation, or permit, and which are created for the purpose of waste treatment are not considered to be water in the state.

Total Maximum Daily Load (TMDL) - The total amount of a substance that a water body can assimilate and still meet the Texas Surface Water Quality Standards.

Commonly Used Acronyms

BMP	Best Management Practice
CFR	Code of Federal Regulations
CGP	Construction General Permit, TXR150000
CWA	Clean Water Act
DMR	Discharge Monitoring Report
EPA	Environmental Protection Agency
FR	Federal Register
IDDE	Illicit Discharge Detection and Elimination
IP	Implementation Procedures
MCM	Minimum Control Measure
MSGP	Multi-Sector General Permit, TXR050000
MS4	Municipal Separate Storm Sewer System
NCTCOG	North Central Texas Council of Governments
NOC	Notice of Change
NOD	Notice of Deficiency
NOI	Notice of Intent
NOT	Notice of Termination (to terminate coverage under a general permit)
NPDES	National Pollutant Discharge Elimination System
SWMP	Storm Water Management Program



SWP3	Storm Water Pollution Prevention Plan
SWPPP	Storm Water Pollution Prevention Plan
SWPPT	Storm Water Pollution Prevention Team
TAC	Texas Administrative Code
TCEQ	Texas Commission on Environmental Quality
TPDES	Texas Pollutant Discharge Elimination System
TWC	Texas Water Code