

Environmental Services

Monthly Report
February 2017



Function

Environmental Services' objective is to assist in making the City of Burleson a great place to live, work and play. We are committed to providing prompt, accurate, consistent and fair service in a friendly manner. Further, we strive to consistently, fairly and impartially regulate established community standards and quality of life issues as set forth by the State and local law.

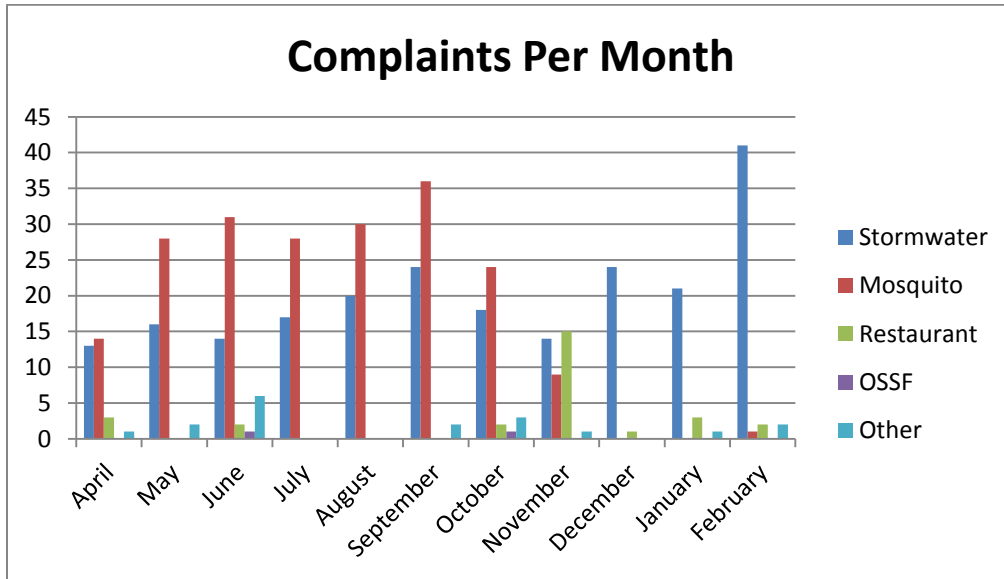
David Lenartowicz, R.S.
Environmental Health
Specialist
817-426-9842
dlenartowicz@burlesontx.com



Larry Miles
Environmental Technician
817-426-9848
lmiles@burlesontx.com

Case Load

In February Environmental Services addressed 46 cases initiated by citizen complaints and routine inspections by staff.



- 41 Stormwater cases
- 1 Mosquito case
- 2 Restaurant Cases
- 0 OSSF cases
- 2 Misc. cases

Public Health

In February there were 37 Public Health Food Establishment inspections and 5 Child Care Facility inspections. Higher scores are the results of increasing infractions. *Not all inspections are scored. Don't see your favorite Burleson restaurant here? Then go and to see how your favorite restaurant scores go at <https://publichealth.tarrantcounty.com/foodinspection/> or www.burlesontx.com/environmentalservices

Inspections

Date	Location	Address	Score
Friday, February 03, 2017	Living Water Day School	342 SW Alsbury BLVD	5
Friday, February 03, 2017	Living Water Day School	342 SW Alsbury BLVD	
Friday, February 03, 2017	Alsbury Food Mart	776 NE Alsbury BLVD	3
	Target Stores Plan Review		
Wednesday, February 08, 2017	Golden Corral	301 SW Wilshire BLVD	11
Wednesday, February 08, 2017	Dunkin Donuts	735 SW Wilshire BLVD	8
Thursday, February 09, 2017	Living Water Day School	342 SW Alsbury BLVD	
Thursday, February 09, 2017	Bartlett Park Concession Stand	550 Sumercrest BLVD	2
Thursday, February 09, 2017	Old Texas Brewing	112 W Ellison St	8
Thursday, February 09, 2017	Old Texas Brewing	112 W Ellison St	3
Thursday, February 09, 2017	Old Texas Brewing	112 W Ellison St	0
Monday, February 13, 2017	1st Baptist Church	317 NW Ellison	3
Monday, February 13, 2017	1st Baptist Church	317 NW Ellison	
Thursday, February 09, 2017	Whataburger	547 SW Wilshire BLVD	4
Tuesday, February 14, 2017	Lizzi's Lunchbox	552 SW Wilshire BLVD	4
Tuesday, February 14, 2017	Kentucky Fried Chicken	600 SW Wilshire BLVD	10
Tuesday, February 14, 2017	Jimmy Johns	674 SW Wilshire BLVD	3
Tuesday, February 14, 2017	Dalton's Corner	200 S. Main Street	14
Tuesday, February 14, 2017	Dalton's Corner	200 S. Main Street	3
Wednesday, February 15, 2017	Comfort Suites	321 S Burleson BLVD	2
Wednesday, February 15, 2017	Best Burger	856 E. Renfro	16
Wednesday, February 15, 2017	Hidden Creek Food Service	700 S Burleson BLVD	3
Thursday, February 16, 2017	Spice Rack	133 S Wilson St	10
Thursday, February 16, 2017	Spice Rack	133 S Wilson St	0
Thursday, February 16, 2017	Dickey's BBQ	251 SW Wilshire BLVD	1
Thursday, February 16, 2017	Gina's Pizzeria	319 NW Renfro	3
Friday, February 17, 2017	Antonio's Mexican Restaurant	344 SW Wilshire BLVD	10
Friday, February 17, 2017	Antonio's Mexican Restaurant	344 SW Wilshire BLVD	0
Friday, February 17, 2017	Taco Bell	821 SW Wilshire BLVD	1
Monday, February 20, 2017	Jack in the Box	300 SW Wilshire BLVD	7
Monday, February 20, 2017	Star One	2004 FM 917	6
Monday, February 20, 2017	Star One	2004 FM 917	2



Date	Location	Address	Score
Monday, February 20, 2017	Fun Times		7
Friday, February 24, 2017	Frescos Cocina	112 S. Main St.	9
Friday, February 24, 2017	Frescos Cocina	112 S. Main St.	6
Friday, February 24, 2017	Babes Chicken Dinner House	120 S. Main St.	5
Friday, February 24, 2017	Burleson Child Development Center	390 SW Johnson Ave	3
Friday, February 24, 2017	Burleson Child Development Center	390 SW Johnson Ave	
Monday, February 27, 2017	Captain Ds	680 SW Wilshire BLVD	1
Monday, February 27, 2017	El Pollo Regio	1216 SW Wilshire BLVD	12
Tuesday, February 28, 2017	New China King Super Buffet	425 SW Wilshire BLVD	16
Tuesday, February 28, 2017	AA China Super Buffet	1045 SW Wilshire BLVD	12

(this area intentionally left blank)



February 2017 Budget Report

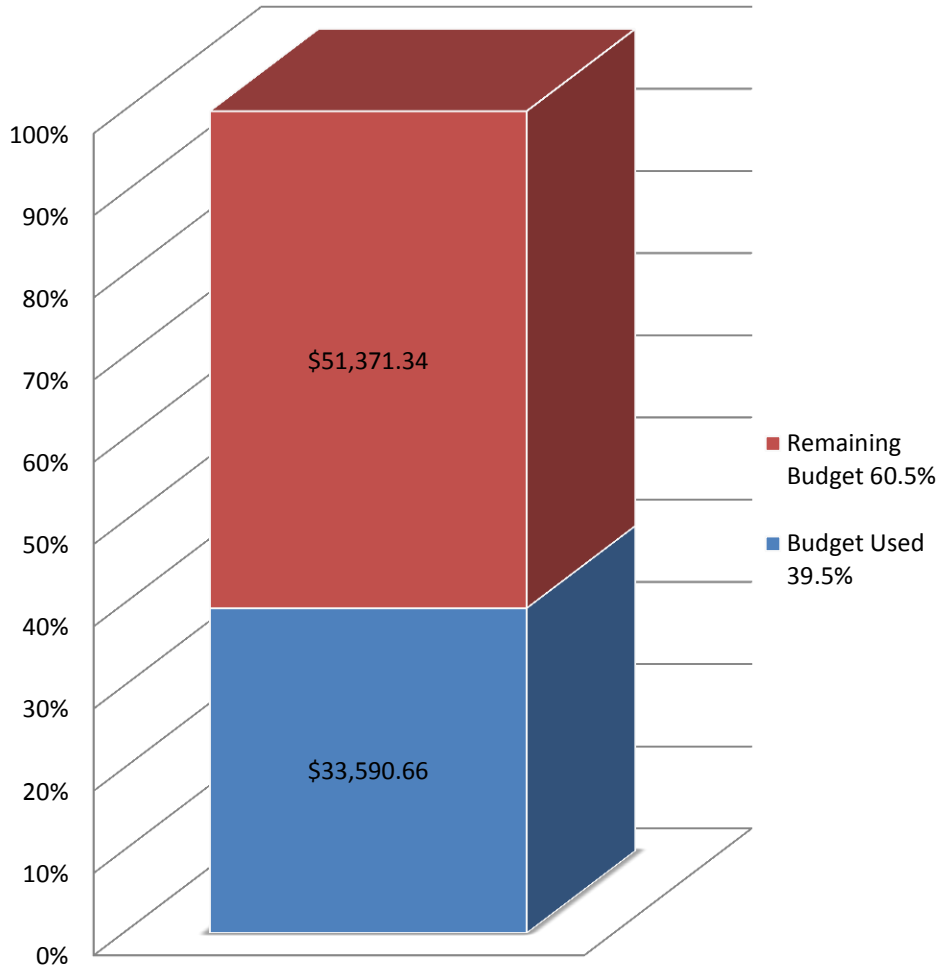
The annual operating budget of the Environmental Services Division for 2016/2017 is \$84,962. With 41.6% of the Budget year elapsed. Environmental Services is within budget with year to date expenditures of \$33, 590.66 or 39.5% of the budget. Expense categories are as follows:

ENVIRONMENTAL SERVICES					
FEBRUARY 2017 EXPENDITURES					
Account Number 001-4515-434	Account Description	Budget	YTD Expenses	Balance	% used
42-08	Equipment Maint. and Repair	\$850	\$8.00	\$842.00	1%
43-02	Insect Control Services	\$16,000	\$4,402.20	\$11,597.80	27.5%
50-01	Memberships and Licenses	\$4,553	\$500.00	\$4,053.00	10.9%
50-02	Subscriptions/Books/Publications	\$40	\$0.00	\$40.00	0%
50-03	Personnel Dev & Activity	\$2,065	\$3,521.72	(\$1,456.72)	>100%
50-08	Mileage Reimbursement	\$1,600	\$0	\$1,600	0%
53-02	Communications/ Access Fees	\$600	\$226.94	\$373.06	37.8%
54-01	Printing & Graphic Services	\$4,200	\$816.19	\$3,383.81	19.4%
55-07	Laboratory Charges	\$1,000	\$0	\$1,000	0%
60-01	Office Supplies and Materials	\$646	\$159.23	\$486.77	24.6%
60-03	Insect Control Supplies	\$2,000	\$248.31	\$1,751.69	12.4%
60-07	Postage	\$100	\$50.57	\$49.43	50.5%
60-11	Minor Tools & Materials	\$500	\$996.15	(\$496.15)	>100%
60-13	Uniforms	\$300	\$356.63	(\$56.63)	>100%

60-14	Protective Clothing/Materials	\$300	\$20.69	\$279.31	6.8%
64-03	Fuel	\$1,319	\$717.12	\$601.88	54.3%
66-03	Minor Machinery&Eqpt	\$0	\$41.38	(\$41.38)	>100%
80-13	Projects/Events/Meetings	\$5,800	\$2,328.18	\$3,471.82	40.1%
82.01	Equipment Replacement Contribution	\$4,880	\$4,880	\$0	100%
82-16	IT Contribution	\$8,970	\$3,737.50	\$5,232.50	41.60%
82-17	Equipment Services Contribution	\$350	\$145.85	\$204.15	41.6%
90-04	Environmental Disposal	28,889	\$10,434.00	\$18,455.00	36.1%
Totals		\$84,962	\$33,590.66	\$51,371.34	39.5%

(this area intentionally left blank)

February 2017 Budget Use





Summary/Scope

The City of Burleson Environmental Services Division works to maintain public health and safety by:

- Maintaining a mosquito surveillance program
- Maintain resident's property values by conducting clean-up events
- Protect the environment by providing means of disposal for household hazardous waste, electronics, and paper shredding
- Ensure city compliance with State and Federal environmental regulations
- Maintain inter-local agreements with local municipalities and counties to ensure services to Burleson residents
- Expand awareness of environmental issues through public education
- Address public concerns and complaints about environmental and public health issues
- Ensure environmental compliance of local manufacturing facilities and construction sites
- Monitor and implement the City of Burleson's Stormwater Management Program as required by the TCEQ Stormwater permit
- Respond to and advise on hazardous materials spills
- Serve as the Executive Director of Keep Burleson Beautiful
- Maintain the City's best interest in regional environmental programs and policy development



Stormwater

The City of Burleson is required to manage a Municipal Separate Storm Sewer System Permit. (MS4) This Permit is issued under the Texas Pollutant Discharge Elimination System. (TPDES) It requires that the City of Burleson create and maintain a series of Best Management Practices (BMP's) in order to protect "Waters of the United States" to the Maximum Extent Practicable (MEP). Primarily the permit requires that the city protect the stormwater conveyances which drain directly into the creeks, streams, rivers, and lakes from illicit discharges from any source by maintaining a Stormwater Management Plan. (SWMP) Illicit discharge sources include but are not limited to industrial activities, construction activities, as well as residential contamination of the MS4. The permit requires that BMP's cover:

- Public education
- Public involvement/participation
- Construction site stormwater runoff control
- Implementation of an illicit discharge detection and elimination system. (IDDES)
- Post construction stormwater management
- Pollution Prevention
- Good housekeeping for municipal operations

The EPA has currently placed Village Creek as an impaired water body for bacteria. Runoff from the City of Burleson storm system drains into these waters. The EPA has not yet determined the source of the bacteria or the Total Maximum Daily Load (TMDL) that it will allow into the impaired water body.

The City of Burleson Environmental Services Division's Stormwater Management Plan has been accepted and approved by TCEQ.

Definition of Terms:

Best Management Practices (BMPs) - Schedules of activities, prohibitions of practices, maintenance procedures, structural controls, local ordinances, and other management practices to prevent or reduce the discharge of pollutants. BMPs also include treatment requirements, operating procedures, and practices to control runoff, spills or leaks, waste disposal, or drainage from raw material storage areas.

Clean Water Act (CWA) - The Federal Water Pollution Control Act or Federal Water Pollution Control Act Amendments of 1972, Pub.L. 92-500, as amended Pub. L. 95-217, Pub. L. 95-576, Pub. L. 96-483 and Pub. L. 97-117, 33 U.S.C. 1251 et.seq.

Conveyance - Curbs, gutters, man-made channels and ditches, drains, pipes, and other constructed features designed or used for flood control or to otherwise transport storm water runoff.

Daily Maximum - For the purposes of compliance with the numeric effluent limitations this is the maximum concentration measured on a single day, by grab sample, within a period of one calendar year.

Discharge - When used without a qualifier, refers to the discharge of storm water runoff or certain non-storm water discharges as allowed under the authorization of this general permit.

Gravid Trap - The trap is designed to attract and capture gravid female mosquitoes of a target species in unharmed condition. The attractant is a baited water solution, either collected locally or formulated to simulate water found in the natural habitat. As gravid females approach the water to deposit eggs, they are pulled upward into a collecting container housed in the upper compartment. This container is removable for inspection or processing of specimens.

Ground Water Infiltration - For the purposes of this permit, groundwater that enters a municipal separate storm sewer system (including sewer service connections and foundation drains) through such means as defective pipes, pipe joints, connections, or manholes.

Illicit Connection - Any man-made conveyance connecting an illicit discharge directly to a municipal separate storm sewer.

Illicit Discharge - Any discharge to a municipal separate storm sewer that is not entirely composed of storm water, except discharges pursuant to this general permit or a separate authorization and discharges resulting from emergency firefighting activities.

Industrial Activities - manufacturing, processing, material storage, and waste material disposal areas (and similar areas where storm water can contact industrial pollutants related to the industrial activity) at an industrial facility described by the TPDES Multi Sector General Permit, TXR050000, or by another TCEQ or TPDES permit.

Large Construction Activity - Construction activities including clearing, grading, and excavating that result in land disturbance of equal to or greater than five (5) acres of land. Large construction activity also includes the disturbance of less than five (5) acres of total land area that is part of a

larger common plan of development or sale if the larger common plan will ultimately disturb equal to or greater than five (5) acres of land. Large construction activity does not include routine maintenance that is performed to maintain the original line and grade, hydraulic capacity, and original purpose of a ditch, channel, or other similar storm water conveyance. Large construction activity does not include the routine grading of existing dirt roads, asphalt overlays of existing roads, the routine clearing of existing right-of-ways, and similar maintenance activities.

Maximum Extent Practicable (MEP) - The technology-based discharge standard for municipal separate storm sewer systems to reduce pollutants in storm water discharges that was established by CWA. 402(p). A discussion of MEP as it applies to small MS4s is found at 40 CFR. 122.34.

MS4 Operator – The public entity, and/ or the entity contracted by the public entity, responsible for management and operation of the small municipal separate storm sewer system that is subject to the terms of this general permit.

Outfall - For the purpose of this permit, a point source at the point where a municipal separate storm sewer discharges to waters of the United States (U.S.) and does not include open conveyances connecting two municipal separate storm sewers, or pipes, tunnels, or other conveyances that connect segments of the same stream or other waters of the U.S. and are used to convey waters of the U.S.

Point Source - (from 40 CFR . 122.22) any discernible, confined, and discrete conveyance, including but not limited to, any pipe, ditch, channel, tunnel, conduit, well, discrete fissure, container, rolling stock, concentrated animal feeding operation, landfill leachate collection system, vessel or other floating craft from which pollutants are or September be discharged. This term does not include return flows from irrigated agriculture or agricultural storm water runoff.

Pollutant(s) of Concern - Include biochemical oxygen demand (BOD), sediment or a parameter that addresses sediment (such as total suspended solids, turbidity or siltation), pathogens, oil and grease, and any pollutant that has been identified as a cause of impairment of any water body that will receive a discharge from an MS4. (Definition from 40 CFR. 122.32(e) (3)).

Redevelopment - Alterations of a property that changed the footprint of a site or building in such a way that there is a disturbance of equal to or greater than one (1) acre of land. This term does not include such activities as exterior remodeling.

Small Construction Activity - Construction activities including clearing, grading, and excavating that result in land disturbance of equal to or greater than one (1) acre and less than five (5) acres of land. Small construction activity also includes the disturbance of less than one (1) acre of total land area that is part of a larger common plan of development or sale if the larger common plan will ultimately disturb equal to or greater than one (1) and less than five (5) acres of land. Small construction activity does not include routine maintenance that is performed to maintain the original line and grade, hydraulic capacity, and original purpose of a ditch, channel, or other similar storm water conveyance. Small construction activity does not include the routine grading of existing dirt roads, asphalt overlays of existing roads, the routine clearing of existing right-of-ways, and similar maintenance activities.

Small Municipal Separate Storm Sewer System (MS4) – refers to a conveyance or system of conveyances (including roads with drainage systems, municipal streets, catch basins, curbs, gutters, ditches, man-made channels, or storm drains): (i) Owned or operated by the United States, a state, city, town, borough, county, district, association, or other public body (created by or pursuant to State law) having jurisdiction over disposal of sewage, industrial wastes, storm water, or other wastes, including special districts under State law such as a sewer district, flood control district or drainage district, or similar entity, or an Indian tribe or an authorized Indian tribal organization, or a designated and approved management agency under .208 of the CWA; (ii) Designed or used for collecting or conveying storm water; (iii) Which is not a combined sewer; (iv) Which is not part of a publicly owned treatment works (POTW) as defined at 40 CFR . 122.2; and (v) Which was not previously authorized under a NPDES or TPDES individual permit as a medium or large municipal separate storm sewer system, as defined at 40 CFR §§122.26(b)(4) and (b)(7). This term includes systems similar to separate storm sewer systems at military bases, large hospital or prison complexes, and highways and other thoroughfares. This term does not include separate storm sewers in very discrete areas, such as individual buildings. For the purpose of this permit, a very discrete system also includes storm drains associated with certain municipal offices and education facilities serving a nonresidential population, where those storm drains do not function as a system, and where the buildings are not physically interconnected to an MS4 that is also operated by that public entity.

Storm Water and Storm Water Runoff - Rainfall runoff, snow melt runoff, and surface runoff and drainage.

Storm Water Associated with Construction Activity - Storm water runoff from an area where there is either a large construction activity or a small construction activity.

Storm Water Management Program (SWMP) - A comprehensive program to manage the quality of discharges from the municipal separate storm sewer system.

Structural Control (or Practice) - A pollution prevention practice that requires the construction of a device, or the use of a device, to capture or prevent pollution in storm water runoff. Structural controls and practices may include but are not limited to: wet ponds, bio retention, infiltration basins, storm water wetlands, silt fences, earthen dikes, drainage swales, vegetative lined ditches, vegetative filter strips, sediment traps, check dams, subsurface drains, storm drain inlet protection, rock outlet protection, reinforced soil retaining systems, gabions, and temporary or permanent sediment basins.

Surface Water in the State - Lakes, bays, ponds, impounding reservoirs, springs, rivers, streams, creeks, estuaries, wetlands, marshes, inlets, canals, the Gulf of Mexico inside the territorial limits of the state (from the mean high water mark (MHHW) out 10.36 miles into the Gulf), and all other bodies of surface water, natural or artificial, inland or coastal, fresh or salt, navigable or nonnavigable, and including the beds and banks of all water-courses and bodies of surface water, that are wholly or partially inside or bordering the state or subject to the jurisdiction of the state; except that waters in treatment systems which are authorized by state or federal law, regulation, or permit, and which are created for the purpose of waste treatment are not considered to be water in the state.



Total Maximum Daily Load (TMDL) - The total amount of a substance that a water body can assimilate and still meet the Texas Surface Water Quality Standards.

Commonly Used Acronyms

BMP	Best Management Practice
CFR	Code of Federal Regulations
CGP	Construction General Permit, TXR150000
CWA	Clean Water Act
DMR	Discharge Monitoring Report
EPA	Environmental Protection Agency
FR	Federal Register
IDDE	Illicit Discharge Detection and Elimination
IP	Implementation Procedures
MCM	Minimum Control Measure
MSGP	Multi-Sector General Permit, TXR050000
MS4	Municipal Separate Storm Sewer System
NCTCOG	North Central Texas Council of Governments
NOC	Notice of Change
NOD	Notice of Deficiency
NOI	Notice of Intent
NOT	Notice of Termination (to terminate coverage under a general permit)
NPDES	National Pollutant Discharge Elimination System
SWMP	Storm Water Management Program



SWP3	Storm Water Pollution Prevention Plan
SWPPP	Storm Water Pollution Prevention Plan
SWPPT	Storm Water Pollution Prevention Team
TAC	Texas Administrative Code
TCEQ	Texas Commission on Environmental Quality
TPDES	Texas Pollutant Discharge Elimination System
TWC	Texas Water Code