

Re-development Plan:

1. Existing condition survey
2. Public meetings
3. Recommendations
4. Action steps
5. Partnerships/Financing



Action Steps:

1. Identify focus areas for re-development
2. Improve pedestrian amenities and attractions
3. Key intersection improvements

Public Improvements

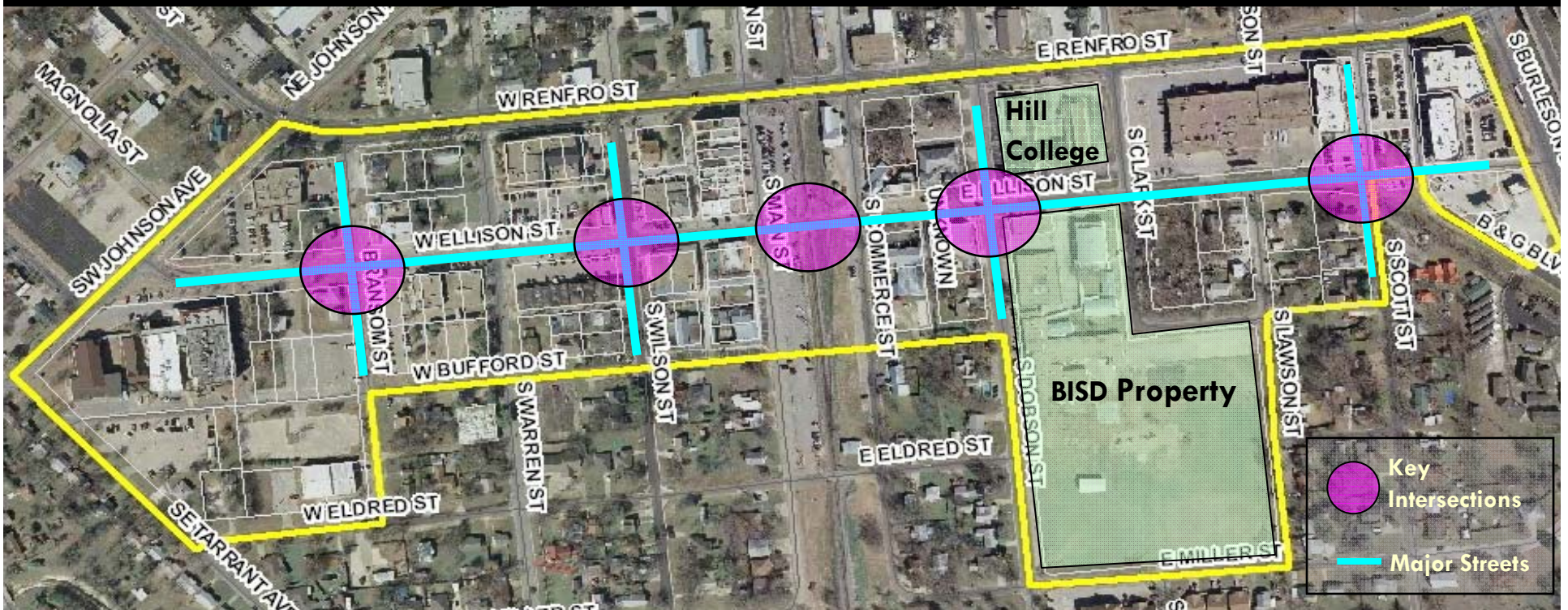
Streetscape – Sidewalk - Landscape

Access Improvements

Vehicular – Pedestrian - Parking

Re-development Trends

Commercial – Residential - Cultural



ELLISON STREET REDEVELOPMENT

Community Development Department
City of Burlison Date: 11/23/2009

ACTION PLAN

