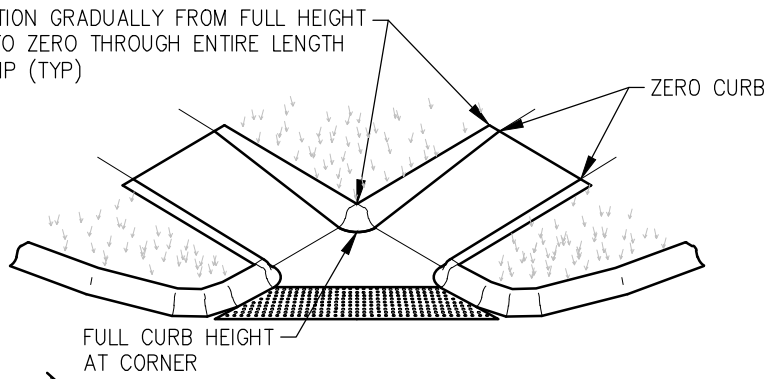
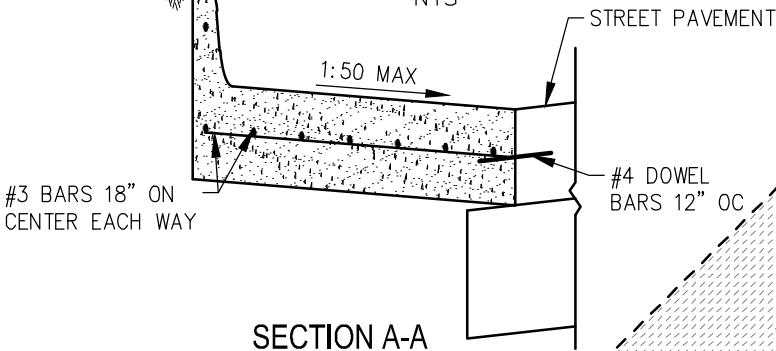


TRANSITION GRADUALLY FROM FULL HEIGHT CURB TO ZERO THROUGH ENTIRE LENGTH OF RAMP (TYP)



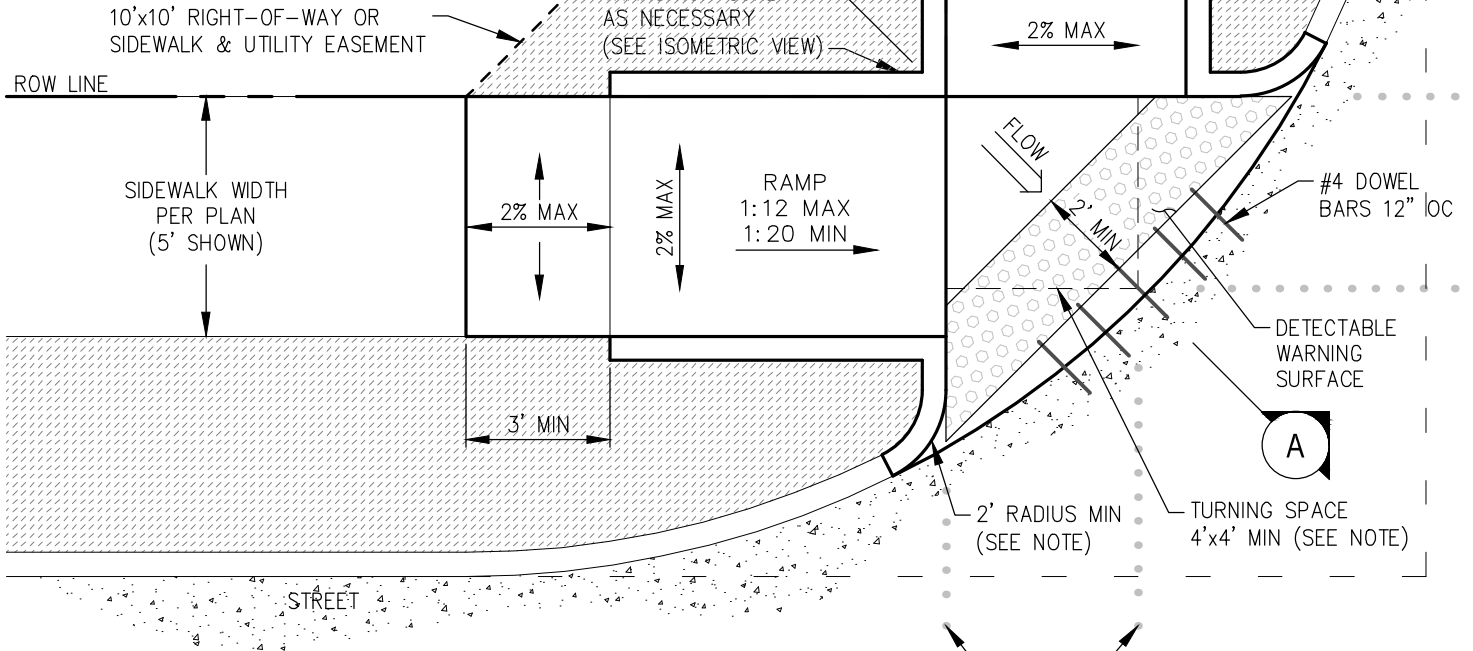
ISOMETRIC VIEW

NTS



SECTION A-A

NTS



NOTES:

1. RAMP SHALL BE NO LESS THAN 5 FEET IN WIDTH.
2. TURNING SPACE SHALL HAVE A MAX SLOPE OF 2% IN ANY DIRECTION BUT SHALL BE SLOPED TO DRAIN TOWARDS THE STREET.
3. CURB RETURN RADII SHALL BE INCREASED FROM 2' MIN AS NECESSARY TO PREVENT OBSTRUCTION OF THE PEDESTRIAN PATH OF TRAVEL.
4. THE MAXIMUM RAMP CROSS-SLOPE IS 1:50 (2%)
5. LANDING SHALL BE MIN 4'x4' AND SHALL NOT BE COLORED OR TEXTURED EXCEPT FOR THE DETECTABLE WARNING SURFACE.
6. CURB RAMP SHALL NOT EXCEED 15' IN LENGTH.
7. RAMP SHALL BE 3,000 PSI REINF CONCRETE WITH #3 BARS ON 18" CENTERS EACH WAY.
8. DOWEL INTO EXISTING CURBS & PAVEMENT WITH 18" #4 BARS ON 12" CENTERS.
9. DETECTABLE WARNING SURFACE SHALL BE TRUNCATED DOMES THE FULL WIDTH OF THE RAMP AS SHOWN WITH A MIN DEPTH OF 2' AND SHALL BE COMPLIANT WITH PROWAG.

PROJECTED PATH OF PEDESTRIAN TRAVEL SHOULD ALIGN WITH OPPOSING RAMP ACROSS INTERSECTION (VARIES PER INTERSECTION)

REVISED: 02/06/2018

P-22b	LOCAL STREET CURB RAMP WITH 5' SIDEWALKS
Burleson	
TEXAS	