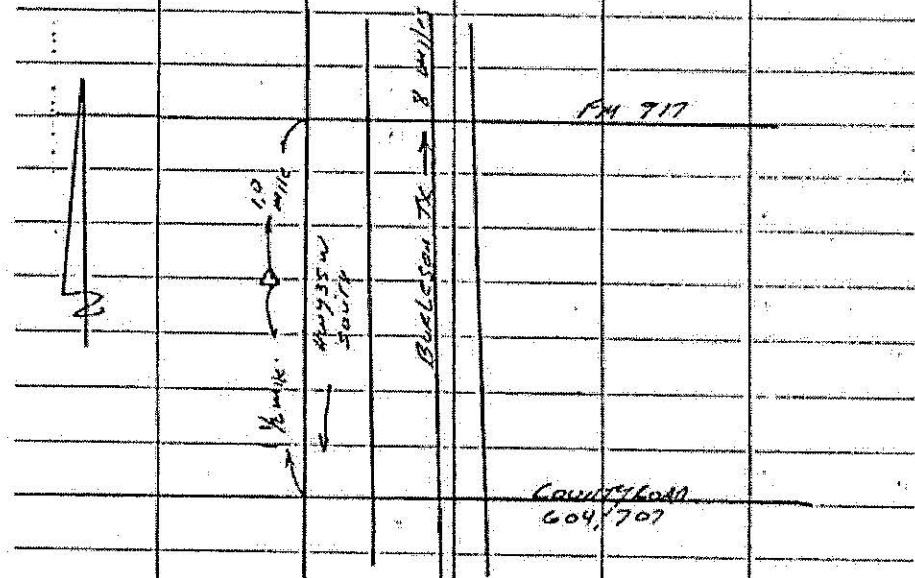


TRCA 47 1/2" I.P. ON PANCE POINT

SITE	SESSION	RUC	DATE	FROM	TO
4	057-3	457	2-26-79	11:18	12:08
4	057-4	457	2-26-79	12:24	1:28



ANT	BEGIN	END
METERS	1.6000	1.6000
FEET	5.29	5.29
METERS	1.475	1.475
FEET	5.28	5.28

